

### SPECIFICATIONS:

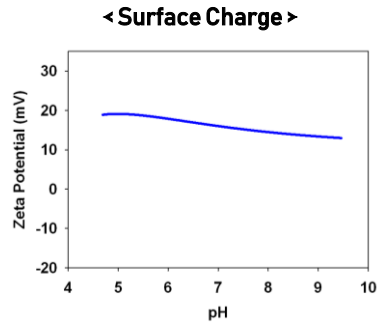
#### General Features

Model	Membrane material	Feed Spacer (mil)	Effective Area (ft²)	Permeate Flowrate (gpd)
UE8040-CEP32	PAN	32	400	6,500
UE8040-CEP46	PAN	46	325	6,500

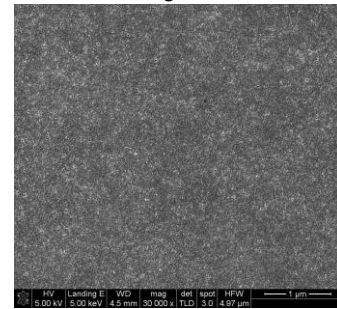
- The stated product performance is based on data taken after 30 minutes of operation at the following test conditions:
  - Deionized Water at 14.5 psig (0.1 MPa) applied pressure
  - 77°F (25°C), pH 6.5~7.0
- Permeate flow rate for each element may vary +20 / -20%.
- All elements are vacuum sealed in a polyethylene bag containing 1.0% SBS (sodium bisulfite) solution and individually packaged in a cardboard box.

**Membrane type:** Ultrafiltration  
**Membrane material:** Polyacrylonitrile(PAN, Positive Charge)  
**Element configuration:** Spiral-Wound, FRP Wrapping

#### Surface Charge & SEM Image (Surface, x30K)

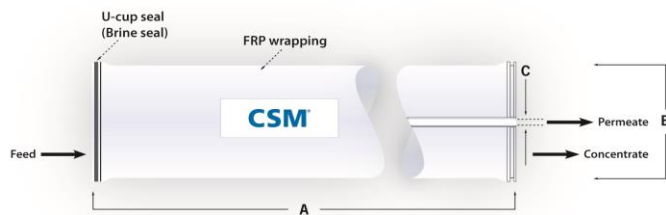


#### < SEM Image >



#### Dimensions and Weight

Model Name	A	B	C	Weight	Part Number	
					Inter-connector	Brine Seal
UE8040-CEP	40.0 inch (1,016 mm)	8.0inch (201 mm)	1.12 inch (28 mm)	15 kg	40000308	40000309



- Each membrane element supplied with one brine seal, one interconnector (coupler) and four o-rings.
- All UE8040 elements fit nominal 8.0 inch (203.2 mm) I.D. pressure vessels.

#### Operating Limits

• Max. Pressure Drop / Element	14.5 psi (0.1 MPa)
• Max. Operating Pressure	80 psi (0.55 MPa)
• Max. Operating Temperature	125 °F (52 °C)
• Operating pH Range	2.0-10.0

#### Toray Advanced Materials Korea Inc.

For more information on our products, company and regional contacts, please visit our website at [www.csmfilter.com](http://www.csmfilter.com).

Product Specification Sheet / Model UE8040-CEP32, CEP46

Page 1 of 1

Rev.4.0 March 2019