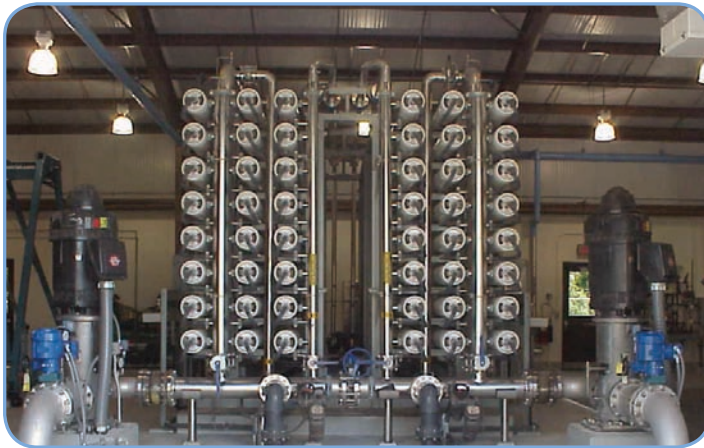


» Municipal Drinking Water



# Gloucester Water Treatment Plant

## Gloucester County, Virginia



### Plant Information

- APPLICATION Municipal drinking water
- FEED SOURCE Groundwater
- PERMEATE CAPACITY 2 MGD
- PRETREATMENT 5 micron cartridge filters
- ELEMENT MODEL **RE8040-BE** (Brackish Water)
- RO TRAIN ARRAY 16:8 (2-stage, 7 elements per pressure vessel)
- NUMBER OF TRAINS 2
- SYSTEM RECOVERY 75–80%
- END USER Gloucester County
- INSTALLATION August 2009

### General Information

CSM Brackish Water spiral wound RO elements are used at the Gloucester County Water Treatment Plant to provide the community with safe, clean and great tasting potable water. Because the RO system treats groundwater sourced from two wells with different depths and of two significantly different water qualities, plant operation and permeate quality will differ depending on which well the RO system is treating.

### Technical Information

Operating Conditions	Well #1	Well #2
SDI	2.5–3.7	2.8–3.9
Temperature (°C)	24–26	23–28
Feed Conductivity (µS/cm)	4000–4300	6700–7200
Permeate Conductivity (µS/cm)	60–75	170–185
Feed Pressure (psi)	200	240
Interstage Pressure (psi)	180	220
Concentrate Pressure (psi)	165	210
Recovery (%)	78–80	75–78
Flux (GFD)	14.9	14.9